

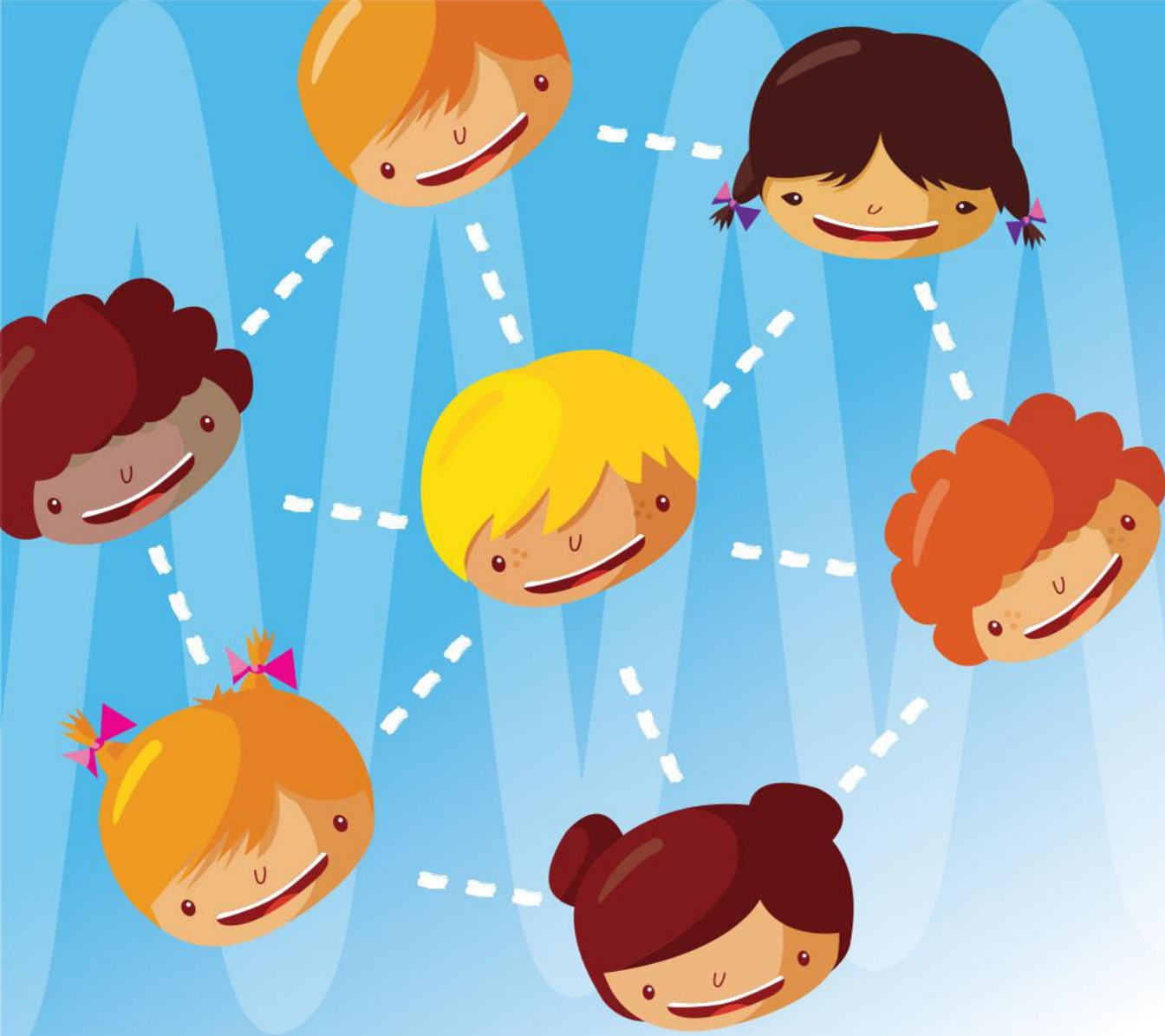
SOUND—CONNECTIONS

Creating listening & spoken language futures



First Voice member & affiliated centres

- 1 **Telethon Speech & Hearing**, Western Australia
- 2 **Hear and Say**, Queensland
- 3 **The Shepherd Centre**, New South Wales and Australian Capital Territory
- 4 **Taralye**, Victoria
- 5 **Cora Barclay Centre**, South Australia
- 6 **The Hearing House**, New Zealand



SOUND—CONNECTIONS

Research Sponsor

First Voice acknowledges and thanks Telstra Foundation for its generous support of Sound Connections. We are delighted to work with a partner that shares our passion for fostering the social inclusion of all young Australians.



TELSTRA
FOUNDATION

SOUND-CONNECTIONS



Findings from the three-year
research project (2011-2014)

SOUND—CONNECTIONS

Supported by a Telstra Foundation Social Innovation Grant

firstvoice
THE FUTURE IS HEAR

Taralye
The oral language centre for deaf children

The Shepherd Centre
Giving deaf children a voice

Speech & Hearing
National Speech & Hearing
Research Centre

Hear and Say
We open up worlds for deaf children

cora barclay centre
A national centre
leading deaf kids to speak

Project Goals

Goal 1: Establish the First Voice dataset for measuring listening and spoken language outcomes

Goal 2: Evaluate the listening, spoken language and social inclusion outcomes of children with hearing loss enrolled in a listening and spoken language early intervention program



Goal 1: Establishing the dataset



First Voice member & affiliated centres

- 1 Telethon Speech & Hearing, Western Australia
- 2 Hear and Say, Queensland
- 3 The Shepherd Centre, New South Wales and Australian Capital Territory
- 4 Taralye, Victoria
- 5 Cora Barclay Centre, South Australia
- 6 The Hearing House, New Zealand

Goal 1: Establishing the dataset

The database contains data on 532 children with hearing loss aged 0-6 years and is updated yearly.

Implications

- It is the largest database for children with hearing loss receiving listening and spoken language early intervention in Australia and New Zealand
- Allows First Voice to conduct large-scale research with the potential to evaluate and enhance services to improve the outcomes of children attending their centres

Goal 2: Evaluating outcomes

Social inclusion outcomes

How we measured

- Reviewed the literature to develop a measurement framework consisting of five faces (perspectives):
 - Economic participation
 - Health and access to services
 - Education
 - Interacting with society and fulfilling social roles
 - Personal independence and self-determination
- Developed a parent-report survey (focusing on 2 faces of social inclusion), completed by 95 parents

Goal 2: Evaluating outcomes

Social inclusion outcomes

Findings

- Children with hearing loss receiving a listening and spoken language early intervention approach:
 - usually demonstrated comparable, if not better social inclusion than typical hearing peers in relation to educational and social outcomes.
- The vocabulary and speech skills of children with hearing loss receiving this model of service delivery were found to impact on some areas of social inclusion

Goal 2: Evaluating outcomes

Social inclusion outcomes

Implications

- Children receiving listening and spoken language early intervention at a First Voice centre usually demonstrate age-appropriate social inclusion outcomes prior to school age
- This was the first study that investigated the social inclusion of children with hearing loss in listening and spoken language early intervention

Goal 2: Evaluating outcomes

Listening and spoken language outcomes

How we measured

- using information from the First Voice dataset, for the 95 children whose social inclusion was assessed

Findings

Children with hearing loss enrolled in listening and spoken language early intervention:

- usually showed language, vocabulary and speech skills commensurate with typical hearing peers

Goal 2: Evaluating outcomes

Implications

- Children receiving listening and spoken language early intervention at a First Voice centre usually achieve age-appropriate listening and spoken language outcomes prior to school age

Future directions

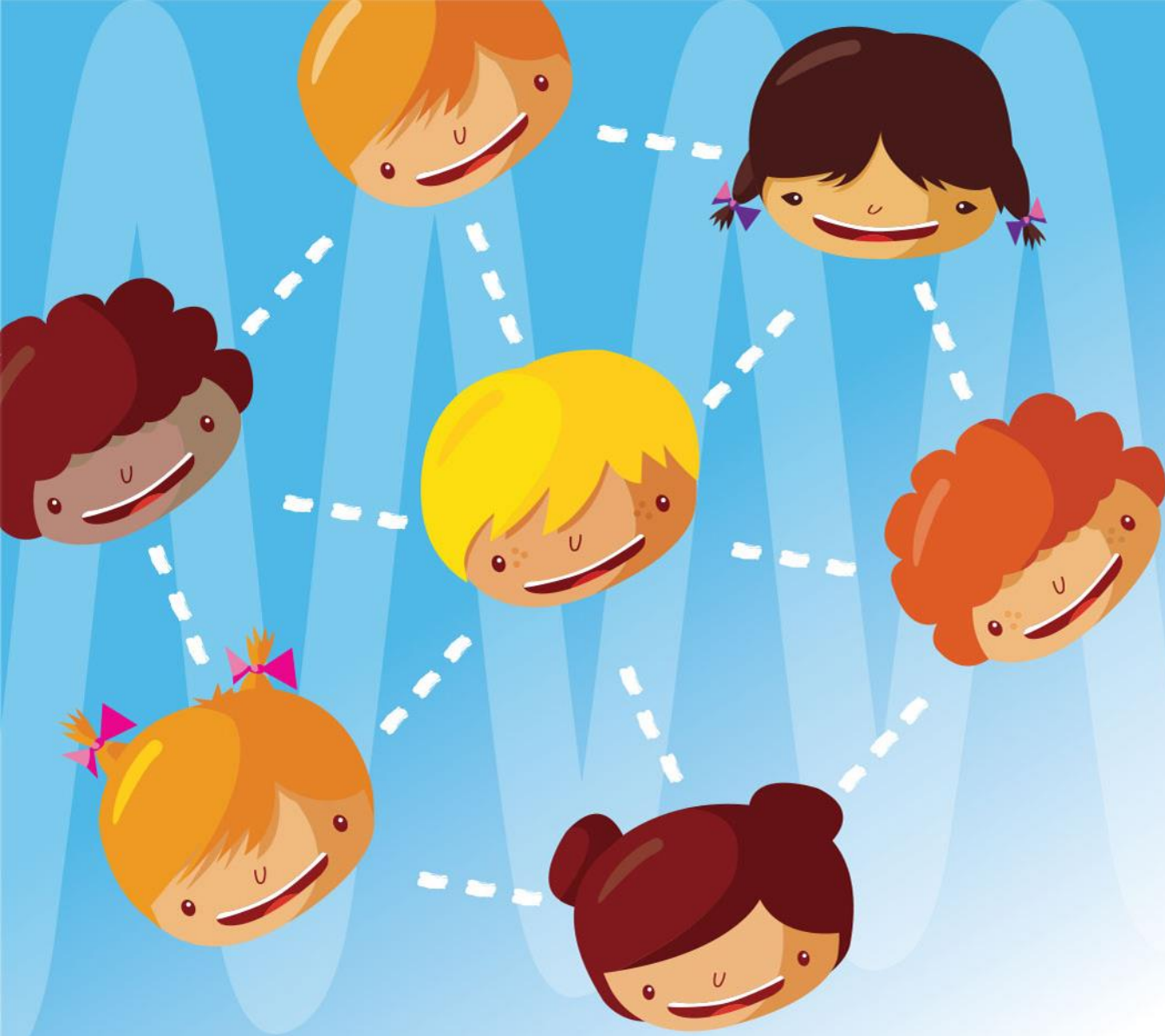
Continue to track the listening, spoken language and social inclusion outcomes of these children every two years

Assess social inclusion across further faces



Acknowledgements

- Telstra Foundation
- All First Voice member centres and participants
- This presentation uses unit record data from Growing Up in Australia, the Longitudinal Study of Australian Children (LSAC). The LSAC study is conducted in partnership between FaHCSIA, AIFS and the ABS. The findings and views reported in this paper are those of the author and should not be attributed to FaHCSIA, AIFS or the ABS.



SOUND—CONNECTIONS

Where to from here?

World first outcomes from Sound Connections will form the foundation for future global research for children with hearing loss



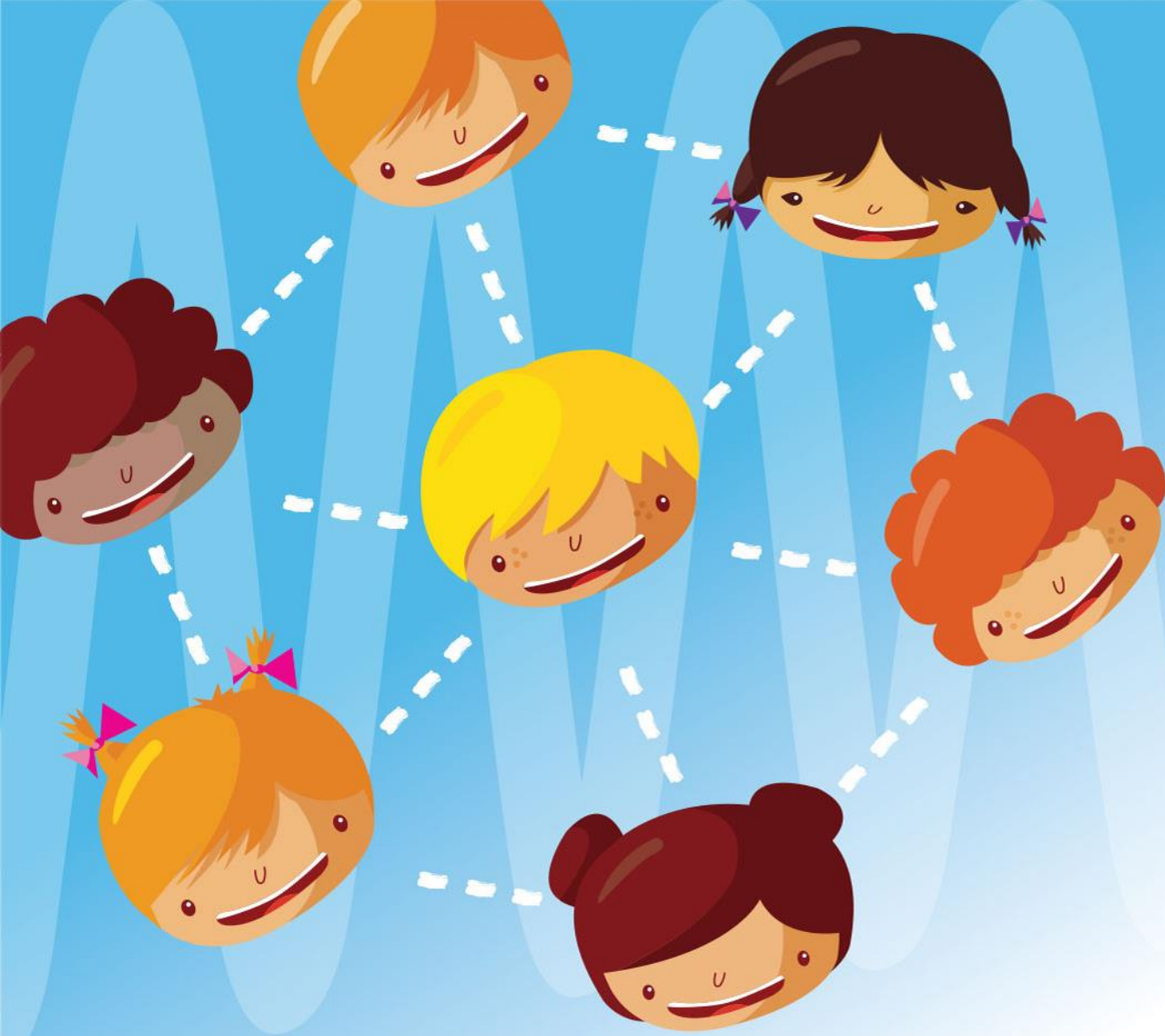
Future research needs:

- Longitudinal listening and spoken language data
- School age data including academic performance
- Neuroscience foundation for listening and spoken language and academic evidence
- Evidence for funding bodies



Outcomes for Extension to Sound Connections:

- Continue to gather listening and spoken language data and social inclusion data
- Longitudinal evidence for clinical models for:
 - Children and families
 - Professionals
 - Funding bodies
 - Governments
- Partnering with other groups/universities to extend studies on a global scale



SOUND—CONNECTIONS