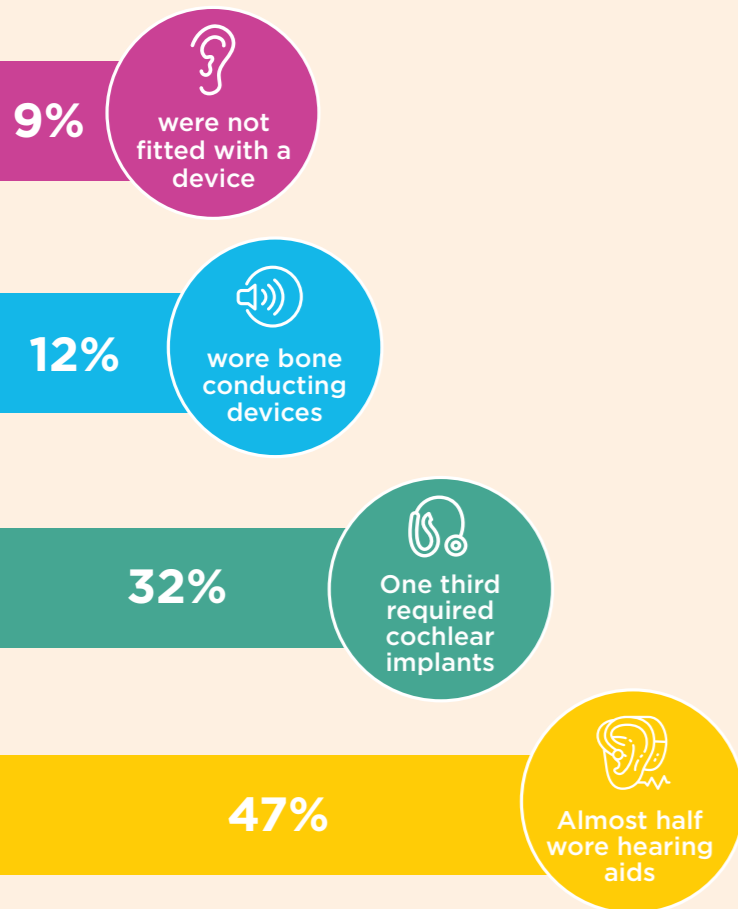
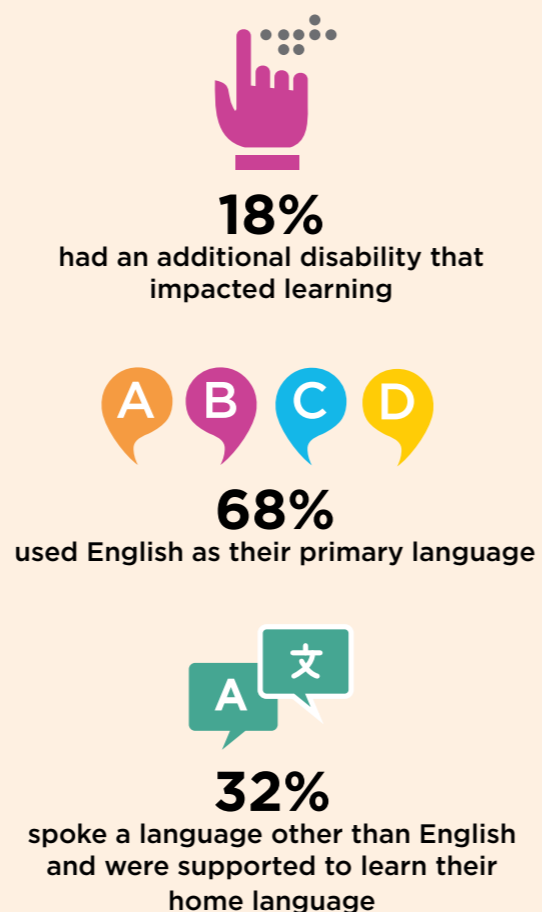


# FIRST VOICE SUPPORTING ALL CHILDREN

## Devices used



## Additional disabilities and language



More than 50% of Australia children with hearing loss are not receiving any specialised services to develop spoken language, can you help First Voice bridge this gap?

### CONTACT

**First Voice Chair - Mark Fitzpatrick**  
 mfitzpatrick@tsh.org.au  
 07 3850 2111

### References

1. First Voice 2020, 2018 Sound Outcomes report. Available here: <https://www.firstvoice.org.au/wp-content/uploads/2020/02/FV-Sound-Outcomes-2018-Report-Final.pdf>
2. Deloitte 2017, Cost-benefit analysis of First Voice's early intervention program. Available here: <https://www.firstvoice.org.au/wp-content/uploads/2016/09/First-Voice-Deloitte-Access-Economics-Cost-Benefit-Analysis.pdf>

\*Outcome data is collected from the centres annually for the previous calendar year. Children in the study met specific criteria for inclusion and were assessed according to the First Voice protocol which includes standardised and non-standardised assessments.

# firstvoice SOUND OUTCOMES: Transforming lives of children with hearing loss through early intervention



## FIRST VOICE AT A GLANCE

First Voice is an association for centres across the globe who provide listening and spoken language early intervention services to children with hearing loss.

In Australia there are approximately 4000 children under 6 with significant permanent hearing loss. Working collaboratively, the First Voice members aspire for each child to reach their maximum potential.

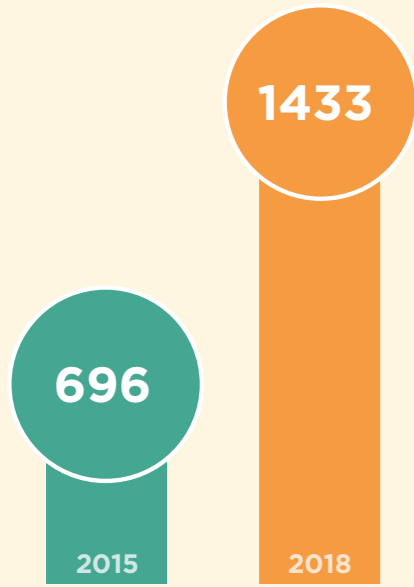


## INTERNATIONAL MEMBERS

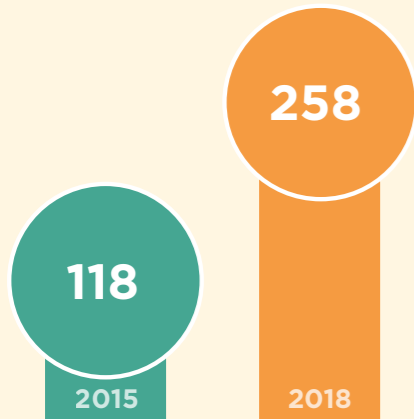


## CHILDREN SUPPORTED BY FIRST VOICE

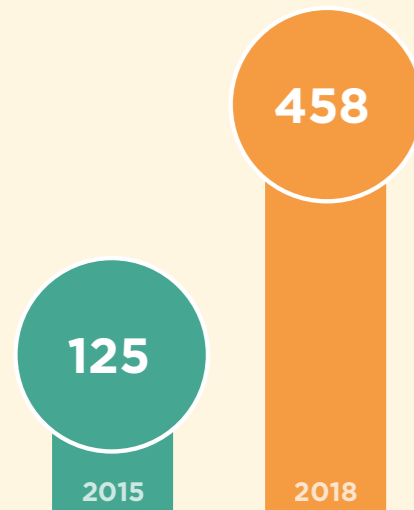
### Our growth



CHILDREN SUPPORTED



ADDITIONAL DISABILITY



ENGLISH AS SECOND LANGUAGE

### Diagnosis

Of these children:



**84%**  
diagnosed through  
Universal Newborn Hearing  
Screening (UNHS)



**16%**  
developed late onset hearing  
loss or were born overseas  
with no screening

### Level of hearing loss



**79%**  
had a bilateral hearing loss  
(both ears)



**21%**  
had a unilateral hearing loss  
(one ear)

The majority of those with bilateral hearing loss have a 'disabling loss', as defined by WHO



**86%**  
of our graduates complete  
tertiary education  
(higher than general population)



## OUR EARLY INTERVENTION WORKS



Early diagnosis  
and  
enrolment



Achieving spoken  
language through  
listening

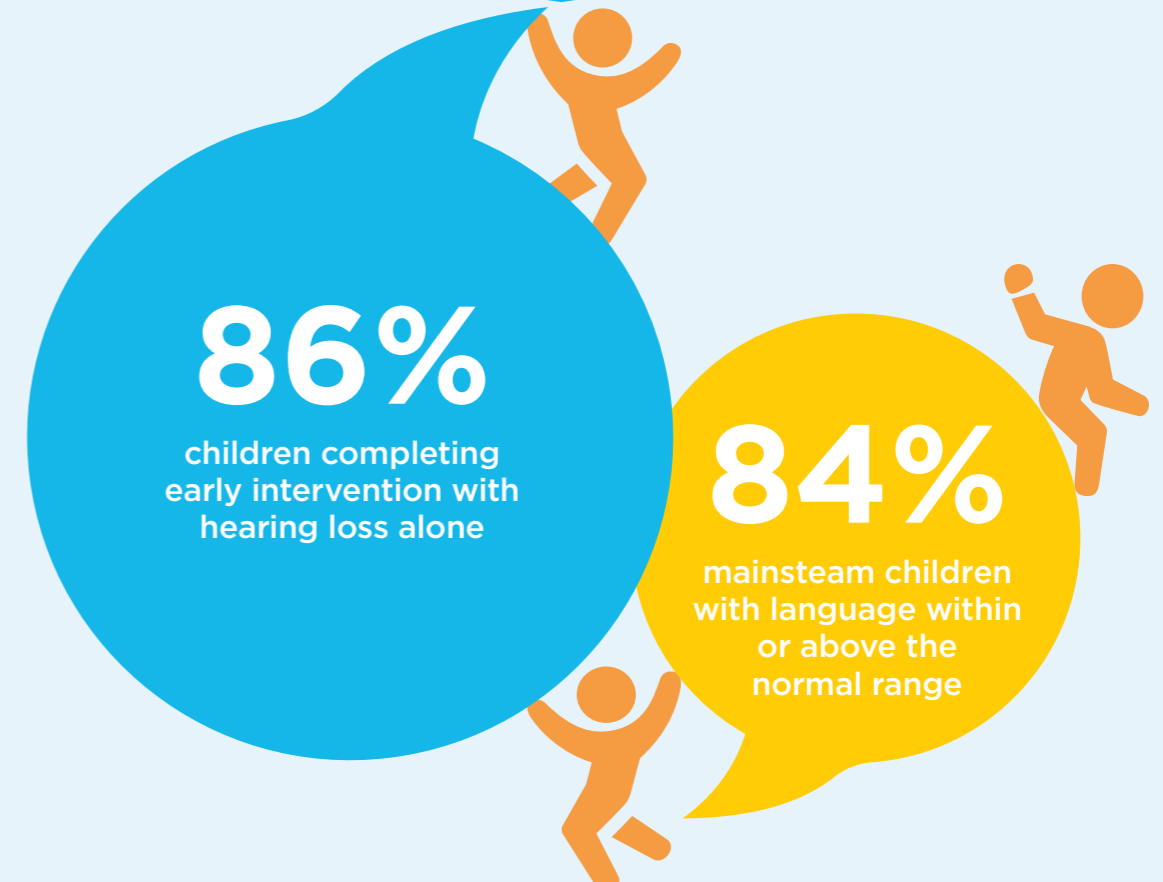


Family  
empowerment



Ongoing  
assessment and  
review

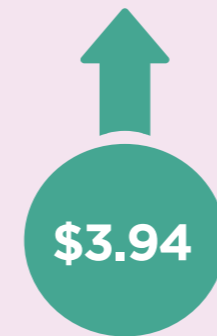
LEADS TO



## COST-BENEFITS OF OUR EARLY INTERVENTION



First Voice programs provided an average benefit of **\$497,000** for each child with bilateral hearing loss



Return on investment for every community dollar invested in a First Voice Early Intervention program



This includes long and short term wellbeing, economic gains and financial benefits



**\$22,000**

Average cost of intensive First Voice early intervention support